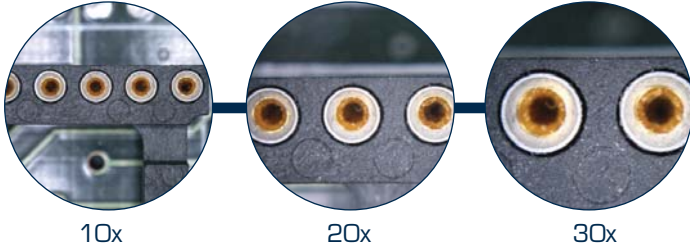




Ω

iSeries

iLoupe



26700-501S

- **World's first compact portable field microscope, available anytime & anywhere**
- **2 in 1 device. Standard Digital Camera & a High Power Microscope**
- **Built in Adjustable LED Lighting**
- **High Resolution 6 mega-pixel Canon Camera**
- **10x, 20x and 30x objective lenses available giving a magnification range of 10x to 150x**
- **Cost Effective Offering with Powerful Functions**

The first compact portable field microscope utilizes a digital camera with a patented module and specially designed lenses with built in high intensity adjustable LED Lights. The iLoupe can clearly capture objects from 6mm to 10 microns. This 2 in 1 device allows you to quickly interchange between a standard digital camera and a microscope. You can now carry a portable field microscope and a digital camera in your pocket with ease. Three objective lenses are available to meet a variety of different applications. Using the optical and digital zoom range of the camera the following magnification ranges are produced:

- With the 10x objective lens: 10x to 60x**
- With the 20x objective lens: 20x to 100x**
- With the 30x objective lens: 30x to 150x**

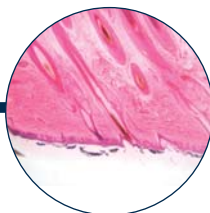
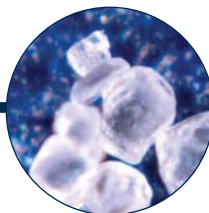
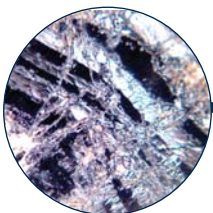
The iLoupe is available in Starter Pack and Pro Pack Versions. The iLoupe Starter Pack includes the Cannon 6 Mega Pixel Camera with the Adapter Ring, Module and a 10x-60x Objective Lens. The iLoupe ProPack includes the Cannon 6 Mega Pixel Camera with the Adapter Ring, Module and three objective lenses (10x-60x), (20x-100x) and (30x-150x). Both the Starter Pack and Pro Pack are supplied in a Plastic Carrying Case.

Applications

QC Inspection
Research

Medical
Forensics

Archaeology
Forestry and Much More



Visit www.aveninc.com to see more images taken with the iLoupe.

iLoupe
Accessories



iLoupe
Carrying Case
26700-506



iLoupe Pro Pack
26700-501P

Specifications

	iLoupe Starter Pack	iLoupe Pro Pack
Objective Lenses included	10x	10x, 20x, and 30x
Magnification Range	10x -60x	10x-150x
Field of View	10x: 16x12mm, 20xx: 9x6.5mm, 30xx: 5.7x4.5mm	
Lens Design	Schott No-Lead Optical Grade Glass	
Coating	Multi-Layer Anti-Reflective Coating	
Built in Dimmable Illumination	4 White LED Lights	
Batteries	Two Li-ion Rechargeable Batteries Included	



iLoupe Stand
26700-505

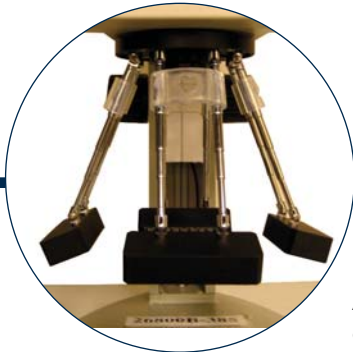
Order #	Description
26700-501S	iLoupe Starter Pack w/ Plastic Carrying Case
26700-501P	iLoupe Pro Pack w/ Plastic Carrying Case
26700-505	iLoupe Stand
26700-506	iLoupe Carrying Case



01

iSeries

iVue



New Patent Pending
Antenna Lighting System
available on 2007 Models



26700-133

View, Capture, Save Images with this all in one digital video inspection system.

Quickly save images to the built in SD Card

3 Mega-Pixel CMOS Camera

No additional hardware or software required.

RCA Port available to attach a 15" or 17" Flat Panel Monitor for increased resolution

Simple to use plug and play system

Relieves eye strain and increases productivity.

Ideal for inspection, collaboration, teaching and documentation

Available in Micro & Macro Configurations

Antenna Lighting System allows for infinite adjustments, providing crisp clear images

The innovative iVue is an all-in-one, plug and play video inspection system. The system allows you to view, capture and save an image without the use of any external hardware or software. Images can be saved to an SD card provided with unit or use the built-in USB connection to transfer images to a PC. The high resolution 8.4" LCD screen allows for easy viewing. Three basic on screen measurement tools are standard. (cross hair, x-y axis and full screen grid in blue, red and white) For accurate measurement an X-Y measurement stage is available. The stage comes mounted to the base of the stand. The iVue has incorporated as standard two of the most popular lighting options. The first is our new *patent pending* Antenna Lighting System. The second is a circular bottom mounted back light built into the unit's base. An optional stainless steel dual arm ball bearing stand is also available. The iVue comes complete with Software for image capture to PC, all required cables, SD Card and protective cover.

iVue Optional Configurations



iVue on Boom Stand
26700-134DBS

**New Patent Pending
Antenna Lighting System
available on 2007 Models
for crisp clear images**



**iVue Micro w/Gliding
Measurement Stage**
26700-133STA

with X-Y and Rotating Gliding Stage with Micrometers for high accuracy measurement (0.001mm) Range of movement 25 x 25mm. iVue Macro is not available with a measuring stage as high accuracy measurement is not possible with the Macro lens

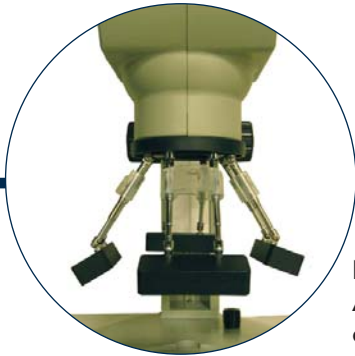
Specifications

	iVue Macro	iVue Micro
Magnification Range	4.7x to 29x	19x to 128x
Field of View	(27.2 x 35)-(4.4 x 5.7) mm	(6.8 x 8.9)-(1.0 x 1.3) mm
Working Distance	170mm	88mm
Digital Magnification	1x to 4x	
Display Screen Size & Res	8.4" TFT LCD (800 x 600 pixels)	
Camera	3 Mega-Pixel CMOS	
Illumination	Antenna Lighting System	

Order #	Description
26700-133	iVue Macro
26700-134	iVue Micro
26700-133STA	iVue Micro with Measurement Stage
26700-133DBS	iVue Macro with S.S. Dual Arm Ball Bearing Stand
26700-134DBS	iVue Micro with S.S. Dual Arm Ball Bearing Stand



iScope



New Patent Pending
Antenna Lighting System
available on 2007 Models



26800B-385

View, Capture, Save Images with this 2 in 1 Stereo Zoom Microscope and Digital Video Inspection System

Quickly save images to the built in SD Card

3 Mega-Pixel CMOS Camera

No additional hardware or software required.

RCA Port available to attach a 15" or 17" Flat Panel Monitor for increased resolution

Simple to use plug and play system

Relieves eye strain and increases productivity.

Ideal for inspection, collaboration, teaching and documentation

Antenna Lighting System allows for infinite adjustments, providing crisp clear images

The iScope is an innovative all in one plug and play inspection system featuring a stereo zoom microscope combined with image viewing and capture feature built on top of the scope. This gives operators the ability to view images in 3D using the binocular microscope and quickly switch to viewing the image on an 8.4" LCD monitor. The system allows you to view, capture and save images without the use of any external hardware or software. Images can be saved to an SD Card provided with the unit or use the built in USB connection and transfer images to a PC. Three basic on screen measurement tools are standard. (cross hair, x-y axis and full screen grid in blue, red and white). For accurate measurement an X-Y gliding stage with micrometers is also available. The stage comes mounted to the base of the stand. The iScope has incorporated as standard two of the most popular lighting options. The first is our new *patent pending* Antenna Lighting System. The second is a circular bottom mounted back light built into the unit's base. An optional stainless steel dual arm ball bearing stand is also available. 10x Eyepieces with rubber eye guards, Software for image capture to PC, SD Card, 0.5x Objective lens, Protective Cover and all required cables are included.

iScope Optional Configurations



iScope on Boom Stand
26800B-385DBS

**New Patent Pending
Antenna Lighting System
available on 2007 Models
for crisp clear images**



iScope Micro w/Gliding
Measurement Stage
26800B-385DBS

with X-Y and Rotating Gliding Stage
with Micrometers for high accuracy
measurement (0.001mm) Range of
movement 25 x 25mm

Specifications

	iScope (3.25x-22.5x)	iScope (6.5x - 45x)
Magnification Range	3.25x to 22.5x	6.5x to 45x
Zoom Ratio	1:7	1:7
Field of View	4.9mm to 38.9mm	2.45mm to 19.45 mm
Working Distance	150mm	75mm
Screen Magnification	7.5x to 52x (800x600pixels)	15x to 104x (800x600pixels)
Camera	3 Mega-Pixel CMOS	
Illumination	Antenna Lighting System	

Order #	Description
26800B-385	iScope 3.25x-22.5x
26800B-386	iScope 6.5x-45x
26800B-385DBS	iScope (3.25x-22.5x) on Boom Stand
26800B-386DBS	iScope (6.5x-45x) on Boom Stand
26800B-385STA	iScope with Measuring Stage



00

iSeries

i360



- **3D 360 degree rotational view with a 45 degree oblique viewing angle.**
- **Zoom 50x-300x with great depth of field
Built in Adjustable LED Lighting**
- **Optional 55 degree oblique viewer available**
- **Built in LED lighting with intensity control**
- **Rotate clockwise or counter clockwise**
- **Ideal for SMT, Semiconductor IC, Medical Devices,
Research and Failure Analysis**

i360 3D Microscope is designed to give you a 3D perspective with rotation to your inspection process. The user can now view the specimen from all angles without having to move it. This helps reduce evaluation times and improves QC process.

i360 also comes with our optional PC Link software that allows for image capture and measurement. It can be also be connected directly to a PC with our optional USB Camera. Our USB Camera comes with our Infinity Analyze Imaging Software. Infinity analyze allows you to quickly and easily process images which can be entered into an archive application or saved in a variety of formats. Measurements and annotations are easy to perform, highly reproducible and can be customized to your needs.

i360 standard version comes with a 50x-300x lens with a 45 degree oblique viewer, high resolution analog color CCD Camera with BNC and S-Video Outputs, Control Box for controlling the LED light intensity, rotation (i.e. counter clockwise or clockwise), and rotational speed, 15" color flat panel monitor, and stand with focusing control. All cables and adapters are also included.

i360 Optional Accessories

- USB Cameras with 1.4, and 2.0 megapixel resolutions
- PC Link Software for image capture, processing and archiving
- 55 Degree Oblique Viewer



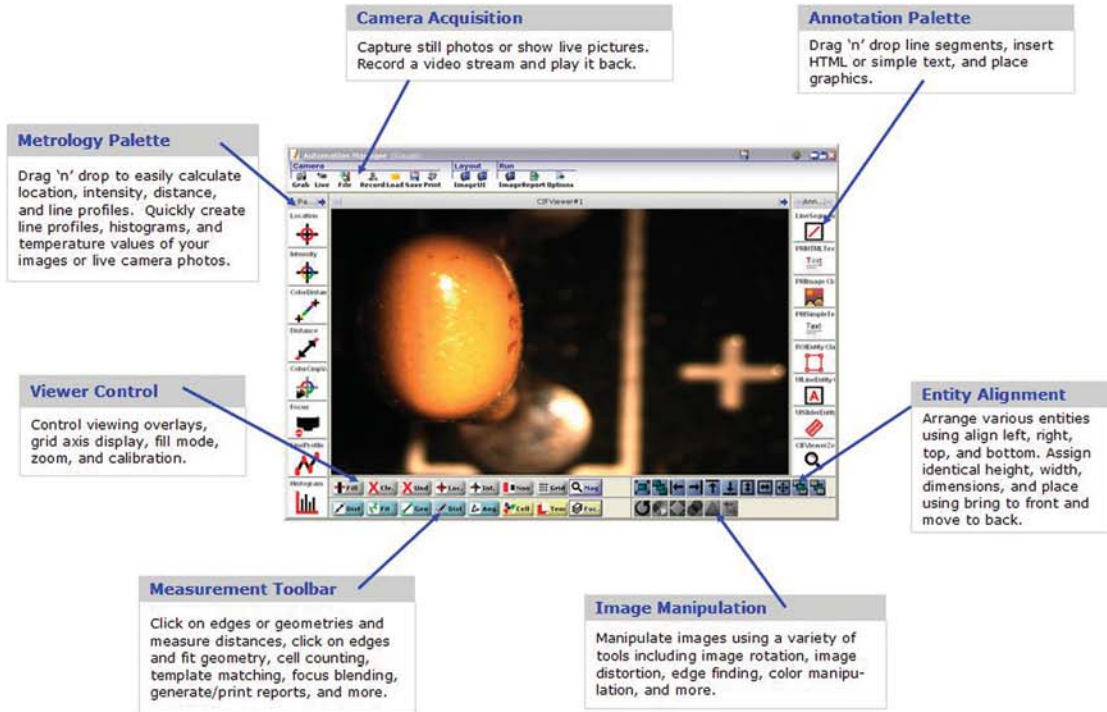
Specifications

Magnification Range	50x-300x
Lighting	LED with Intensity Control
Camera	1/3" CCD Color Camera
Working Distance	55.5mm
Depth of Field	8mm to 1.2mm
Field of View	9.2mm to 1.3mm

Order #	Description
26700-106	i360 3D Microscope with 45 degree Viewer, 1/3" CCD Color Camera, Controller, Stand with Focus Control, and 15" Color Flat Panel Monitor.
26700-106-14	i360 3D Microscope with 45 Degree Viewer, USB 1.4 Mega Pixel Camera with Infinity Analyze Imaging Software, Controller, Stand with Focus Control
26700-106-20	Same as 26700-106-14 USB 1.4 Megapixel Camera replaced with our USB 2.0 Megapixel Camera
26100-403	PC Link Software for Image Capture, Processing and Archiving for use with our Analog CCD Camera included in system 26700-106. Basic measurement functions are included.
26700-106-10	55 Degree Oblique Viewer



iGauge Video Imaging and Measurement Software



iGauge allows you to measure, annotate and analyze your images with just a few clicks. iGauge will dramatically increase the capability of any video camera based system . **Test Drive iGauge by downloading a 30 day trial version from our website www.aveninc.com**

SIMPLE AND EASY TO USE

Features:

- Image Capture, Record & Playback
- Viewing Tools
- Toolbar Geometry /Metrology
- Geometry Tools
- Annotation Tools
- Metrology Tools
- Image Processing Tools
- Reporting Tools
- Image Manipulation Tools
- Intuitive Interface

Order #	Description
---------	-------------

26100-401	iGauge Video Software
-----------	-----------------------



Aven Micro Zoom Video Inspection System VIS-6000



- **Designed for high magnification and high resolution applications**
- **Modular design allows you to vary magnification, field of view, and working distance**
- **Easily upgradeable**
- **Magnification Range: 21x-133x (41- 267x with the 0.5x lens removed)**
- **Working Distance: 143mm (5.6") to 187mm (7.36") (81-93mm with the 0.5x lens removed)**
- **Field of View: 12.7mm (0.5") to 1.93mm (0.076") (8.58-1.33m with the 0.5x lens removed)**

Applications
 Inspection of a wide range of objects such as integrated circuits, solder joints, surface analysis, quality control and laboratory inspection

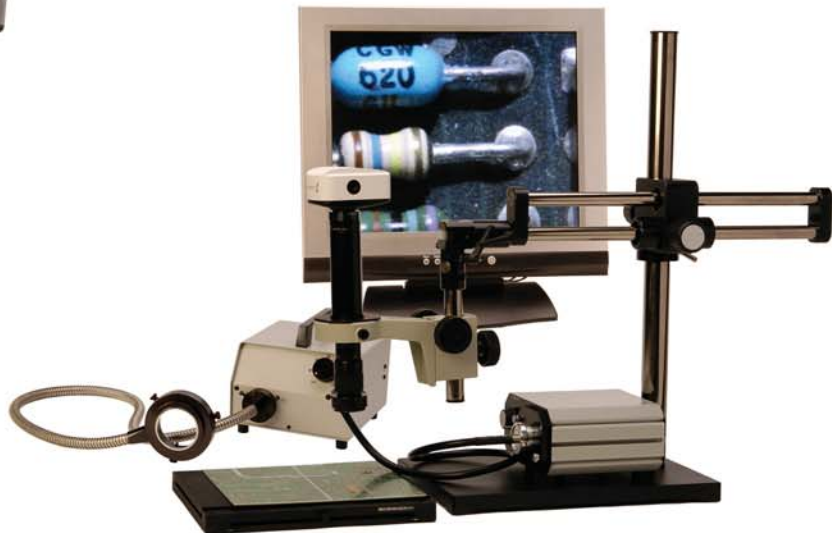
Customization
 A variety of adapters & auxiliary lens, cameras, lighting options, video capture cards, and stands are available to provide a custom solution.

Magnification Range
 5x to 2735x possible.
 Call for more information.

Order #	Description
26700-102	VIS 6000 with 1/3" CCD Camera, 14" Flat Panel Monitor, 150 watt FOI with Ring Light. Mounted on the Standard Stand with 11"x18" base. Optional PC Link Software for Image Capture available



Micro Zoom Video Inspection System on Articulating Arm
26700-102-15



Micro Zoom Video Inspection System on Boom Stand
2700-102-10

Specifications

Lens Attachment	Mag/Field of View (mm)	.5x Adapter		1x Adapter		2x Adapter		5x Adapter	
		Low	High	Low	High	Low	High	Low	High
0.25x	Magnification	5x	33x	10x	67x	21x	134x	52x	329x
	Field of View	68.64	10.64	34.32	5.32	17.16	2.66	6.88	1.08
0.5x	Magnification	10x	67x	21x	133x	41x	267x	104x	671x
	Field of View	34.32	5.32	17.16	2.67	8.58	1.33	3.43	0.53
0.75x	Magnification	16x	100x	31x	200x	62x	400x	155x	1016x
	Field of View	17.16	2.67	8.58	1.33	4.29	0.67	1.72	0.27
None	Magnification	21x	133x	41x	267x	83x	531x	207x	1317x
	Field of View	17.16	2.67	8.58	1.33	4.29	0.67	1.72	0.27
1.5x	Magnification	31x	200x	62x	400x	124x	808x	312x	1976x
	Field of View	11.43	1.78	5.72	0.89	2.86	0.44	1.14	0.18
2x	Magnification	41x	267x	83x	531x	165x	1078x	413x	2735x
	Field of View	8.58	1.33	4.29	0.67	2.15	0.33	0.86	0.13

* Note magnification data calculated based on 1/3" CCD camera and a 14" LCD Monitor.

Order

Description

26700-102-10

VIS 6000 – Same system as 2700-102 but mounted on a Dual Arm Ball Bearing Stand with a 1.4 Megapixel USB Camera with Image Capturing and Measurement Software. *Monitor not Included.*

26700-102-15

VIS 6000 – Same system as 2700-102-10 but mounted on an Articulating Arm with Mounting Clamp. *Monitor not Included.*



Aven Micro Zoom Video Inspection System

for High Accuracy Field of View Measurement



2700-102-20

- **Detented Lens System for Easy Calibration**
- **Magnification Range: 38x-266x**
- **Working Distance: 3.9"**
- **Field of View: 9.3mm (0.4") to 1.3mm (0.05") (Larger field of views can be obtained with different camera chip sizes and lens configurations.)**
- **3.3 Megapixel USB Digital CCD Camera**
- **Imaging Software Included for High Accuracy Measurement, Annotation Advanced Image Processing. See pageXXX**

Applications

Defect Analysis, Semiconductor Inspection, Metrology, Quality Control & Laboratory Inspection.

Customization

A variety of adapters & auxiliary lens, cameras, lighting options, video capture cards, and stands are available to provide a custom solution.

Video System Includes

- Detented Lens System with Zoom Ratio 0.65x-4.5x
- Stand with Focus Mount (Base 11"x13" Vertical Post 16")
- 3.3 Megapixel USB Digital CCD Camera
- Imaging & Measurement Software
- 150 Watt Fiber Optic Illuminator with Shadow Free Annular Ring Light

**PC with Monitor Required for Above System*

Order #

Description

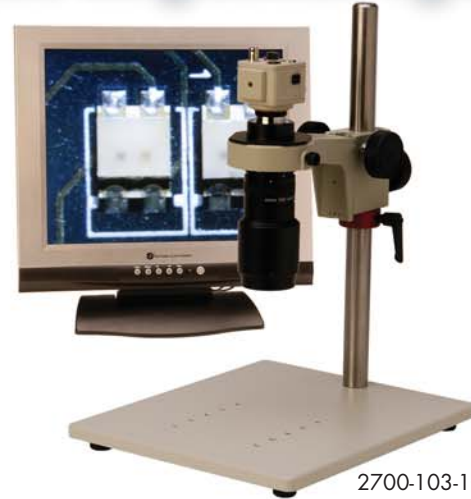
26700-102-20

Micro Zoom Video Inspection System for HAFVM

Aven Macro Zoom Video Inspection System



Macro Zoom Video Inspection System on Boom Stand
2700-103



2700-103-10

- **Designed for Large Field of View Applications**
- **6x Macro Zoom Lens with Adjustable Iris and Close-Up Lens**
- **Magnification: Up to 61.9x at 5.5" Working Distance on a 14" Monitor**
- **Field of View: 224mm (8.8") to 298mm (11.7") (at 48" working distance allows inspection of large samples.)**
- **Adjustable Focus: 5" to Infinity**

Applications

Quality Assurance, biomedical imaging or assembly applications where an easy to view, sharp and true-to-life magnified image is required.

Customization

A variety of adapters & auxiliary lens, cameras, lighting options, video capture cards, and stands are available to provide a custom solution. See chart below for more information on magnification & field of view ranges possible.

Specifications w/Close-Up Lens

Working Distance	FOV(mm) @ Low Mag.	FOV(mm) @ High Mag.	Magification Range
5.5"	20x27	3.2x4.3	9.9X - 61.9X
7"	32x43	5.4x7.6	6.2X - 36.7X
8"	39x52	6.5x8.6	5.1X - 30.5X
9"	45x60	7.6x10.3	4.4X - 26.1X
10"	49x65	8.6x11.9	4X - 23X
11"	54x72	9.2x12.4	3.7X - 21.5X

w/o Close-Up Lens

Working Distance	FOV(mm) @ Low Mag.	FOV(mm) @ High Mag.	Magification Range
11"	42.6x56.7	7.6x10.3	4.6X - 26X
24"	107x143	18x23.8	1.9X - 11X
36"	168x224	29.7x39.4	1.2X - 5X
48"	224x298	37.8x50.2	0.9X - 5.3X

Order #	Description
26700-103	6x Macro Lens mounted on a SS Dual Arm Ball Bearing Boom Stand, 1/3" CCD Camera, 14" LCD Monitor, PC Link Device and Software for Image Capture
26700-103-10	Same System as 26700-103, except lens system is mounted on a Standard Stand

*Please note, in most applications additional illumination is not required for this lens system.

Stereo Zoom Microscopes

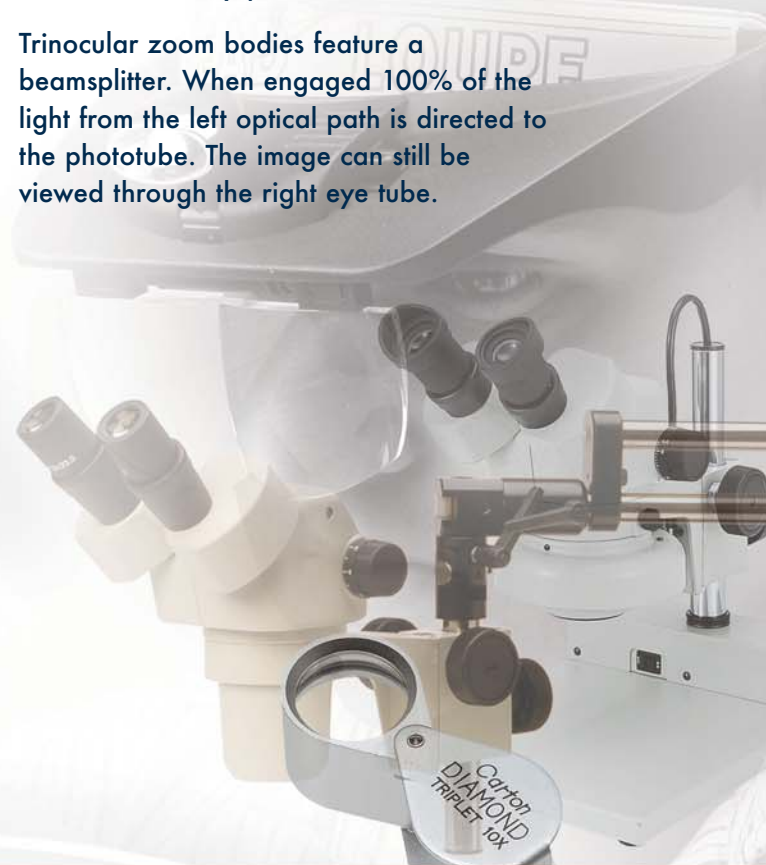
Our stereo zoom and stereo microscopes are manufactured exclusively for Aven by Carton Optical of Japan. Carton Optical has been manufacturing microscopes for over 40 years. Their microscopes have gained a reputation for providing the very best in optical performance, durability, and versatility. With a diverse selection of bodies, stands, and lighting techniques a system can be configured to fit any application.

To configure your system select:

1. The microscope body that meets your magnification, field of view and working distance requirements. Note with a combination of eyepieces and auxiliary lens you can tailor a system to meet your requirements.
2. Focusing Mount
3. Stand (please take into account the working distance and the height of the stand)
4. Illumination, Fiber Optic, Fluorescent or LED.
5. Camera and or adapter if you are using a trinocular body
6. Monitor if necessary

All stereo zoom bodies listed below feature:

- Crisp high resolution precision optics that provide an erect, non-reversed stereoscopic image
- Binocular eyepieces inclined at 45 degrees for fatigue free viewing
- Diopter adjustments on both eyepieces
- Interpupillary distance adjustment 52mm to 75mm
- Body can be rotated a full 360 degrees and locked in any position
- Trinocular zoom bodies feature a beamsplitter. When engaged 100% of the light from the left optical path is directed to the phototube. The image can still be viewed through the right eye tube.



SPZ-50 Series

Outstandingly large zoom ratio 7.46:1-best zoom ration in this class

Total zoom magnification from 6.7x to 50x

Field of View 34.3mm to 3.6mm (1.35" x 0.14")

Working distance 108mm (4.25") - the best in this class

Magnification range of 2.25x to 200x with optional lenses

17mm (0.67") high eye point wide field 10x eyepieces (field number 23) for comfortable viewing even for operators with eyeglasses.

Trinocular version has diopter adjustment on vertical tube for fine focusing of image

** Note specifications mentioned above are with Wide Field 10x eyepieces.*



SPZ-50

Binocular stereo zoom body with 10x eyepieces, rubber eye guards and dust cover

18

Stereo Zoom Microscopes

Optical Data

Eyepiece	DHW10X (F.N. 23)				
Auxiliary Lens	Nil	w/0.5x	w/0.75x	w/1.6x	w/2x
Magnifications	6.7x-50x	3.35x-25x	5x-37.5x	10.72x-80x	13.4x-100x
Working Dist.	108mm	240mm	132mm	50mm	41mm
Field of View	34.3-4.6mm	68.9-9.2mm	45.7-6.1mm	21.4-2.8mm	17.1-2.3mm

Eyepiece	DHW15X (F.N. 15)				
Auxiliary Lens	Nil	w/0.5x	w/0.75x	w/1.6x	w/2x
Magnifications	10.05x-75x	5.02x-37.5x	7.53x-56.25x	16.08x-120x	20.1x-150x
Working Dist.	108mm	240mm	132mm	50mm	41mm
Field of View	22.3-3mm	44.7-6mm	29.8-4mm	16-1.8mm	11.1-1.5mm

Eyepiece	DHW20X (F.N. 11.4)				
Auxiliary Lens	Nil	w/0.5x	w/0.75x	w/1.6x	w/2x
Magnifications	13.4x-100x	6.7x-50x	10.05x-75x	21.44x-160x	26.8x-200x
Working Dist.	108mm	240mm	132mm	50mm	41mm
Field of View	17-2.2mm	34-4.5mm	22.6-3mm	10.6-1.4mm	8.5-1.1mm



SPZT-50

Trinocular stereo zoom body with 10x eyepieces, rubber eye guards and dust cover

Order #	Description
SPZ-50	SPZ-50 Binocular
SPZT-50	SPZT-50 Trinocular



DSZ-44 Series



DSZ-44

Binocular stereo zoom body with 10x wide field eyepieces, Rubber eye guards and dust cover



DSZT-44

Trinocular stereo zoom body with 10x wide field eyepieces, Rubber eye guards and dust cover

10 Stereo Zoom Microscopes

Zoom Ratio of 4.4:1

Total Magnification from 10x to 44x

Field of View of 23mm to 5.3mm (0.90" to 0.20")

Working distance 90mm (3.54")

Magnification range of 2.5x to 140.8x with optional lenses

Wide Field 10x Eyepieces (field number 23)

** Note specifications mentioned above are with Wide Field 10x eyepieces.*

Optical Data

Eyepiece	DSW5X (F.N. 22.5)			
Auxiliary Lens	Nil	w/0.5x	w/0.75x	w/1.6x
Magnifications	5x-22x	2.5x-11x	3.75x-16.5x	8x-35.2x
Working Dist.	90mm	150mm	105mm	45mm
Field of View	22.5-5.1mm	45-10.2mm	30-6.8mm	14-3.1mm

Eyepiece	DSW10X (F.N. 23)			
Auxiliary Lens	Nil	w/0.5x	w/0.75x	w/1.6x
Magnifications	10x-44x	5x-22x	7.5x-33x	16x-70.4x
Working Dist.	90mm	150mm	105mm	45mm
Field of View	23-5.2mm	46-10.4mm	30.6-6.9mm	14.3-3.2mm

Eyepiece	DSW15X (F.N. 15)			
Auxiliary Lens	Nil	w/0.5x	w/0.75x	w/1.6x
Magnifications	15x-66x	7.5X-33X	11.25X-49.5X	24X-105.6X
Working Dist.	90mm	150mm	105mm	45mm
Field of View	15-3.4mm	30-6.8mm	20-49.5mm	9.3-2.1mm

Eyepiece	DSW20X (F.N. 11.4)			
Auxiliary Lens	Nil	w/0.5x	w/0.75x	w/1.6x
Magnifications	20x-88x	10x-44x	15x-66x	32x-140.8x
Working Dist.	90mm	150mm	105mm	45mm
Field of View	11.4-2.5mm	22.8-5.1mm	15.2-3.45mm	7.1-1.6mm

Order # Description

DSZ-44	DSZ-44 Binocular
DSZT-44	DSZT-44 Trinocular

DSZ-70 Series

- For high magnification applications
- Zoom Ratio of 3.5: 1
- Total Magnification from 20x to 70x
- Field of View of 10mm to 2.8mm (0.39" to 0.11")
- Working distance 80mm (3.15")
- Magnification range of 5x to 224x with optional lenses
- Wide Field 10x Eyepieces (field number 20)

* Note specifications mentioned above are with Wide Field 10x eyepieces.

Optical Data

Eyepiece	DSW5XZ (F.N. 20)			
Auxiliary Lens	Nil	w/0.5x	w/0.75x	w/1.6x
Magnifications	10x-35x	5x-17.5x	7.5x-26.25x	16x-56x
Working Dist.	80mm	120mm	85mm	41mm
Field of View	10-2.9mm	20-5.7mm	13.3-3.8mm	6.2-1.7mm

Eyepiece	DSW10XZ (F.N. 20)			
Auxiliary Lens	Nil	w/0.5x	w/0.75x	w/1.6x
Magnifications	20x-70x	10x-35x	15x-52.5x	32x-112x
Working Dist.	80mm	120mm	85mm	41mm
Field of View	10-2.8mm	20-5.7mm	13.3-3.8mm	6.2-1.7mm

Eyepiece	DSW15X (F.N. 15)			
Auxiliary Lens	Nil	w/0.5x	w/0.75x	w/1.6x
Magnifications	30x-105x	15x-52.5x	22.5x-78.75x	48x-168x
Working Dist.	80mm	120mm	85mm	41mm
Field of View	7.5-2.1mm	15-4.2mm	10-2.8mm	4.6-1.3mm

Eyepiece	DSW20X (F.N. 11.4)			
Auxiliary Lens	Nil	w/0.5x	w/0.75x	w/1.6x
Magnifications	40x-140x	20x-70x	30x-105x	64x-224x
Working Dist.	80mm	120mm	85mm	41mm
Field of View	5.7-1.6mm	11.4-3.2mm	7.6-2.1mm	3.5-1mm

Order # Description

DSZ-70	DSZ-70 Binocular
DSZT-70	DSZT-70 Trinocular



DSZ-70

Binocular stereo zoom body with 10x wide field eyepieces, Rubber eye guards and dust cover



DSZT-70

Trinocular stereo zoom body with 10x wide field eyepieces, Rubber eye guards and dust cover

20

Stereo Zoom Microscopes



NSW Series

Stereo Microscopes

21

Stereo Zoom
Microscopes



Large stage to accommodate large parts. A long life and low temperature 9W fluorescent lamp is used for the built-in incident light.
Magnification: 10x & 30x

Order #	Description
26876	NSW-30PF Microscope



Features a large stage to accommodate large parts. For illumination, we recommend our fluorescent ring lights or our fiber optic illuminator with our annular ring light. If an auxiliary lens is not used a ring light adapter will be required to install the fluorescent ring light or the annular ring light.
Magnification: 10x & 30x

Order #	Description
26877	NSW-30P Microscope

- Dual Magnification of 10x & 20x, or 10x & 30x or 20x & 40x bodies available
- Single Magnification of 10x or 20x bodies available
- 10x Wide Field Eyepieces standard (field number 23)
- Field of View: 23mm (0.91") at 10x, 11.5mm (0.45") at 20x, 7.6mm (0.30") at 30x and 5.7mm (0.22") at 40x

Order #	Description
NSW-1	Single 10x Stereo Body
NSW-2	Single 20x Stereo Body
NSW-20	Dual Magnification 10x & 20x Stereo Body
NSW-30	Dual Magnification 10x & 30x Stereo Body
NSW-40	Dual Magnification 20x & 40x Stereo Body
NSW-620	Dual Magnification 6x & 20x Stereo Body**

* Each Body comes with Wide Field 10x eyepieces
Rubber Eye Guards and dust cover

** NSW-620 will not work with stand T

Preconfigured Systems

Shown below are some of our popular systems or you can configure a system to match your application

Stand Systems



Order #	26800B-302
Model DSZ-44PF	
DSZ-44 Stereo Zoom Binocular Microscope 10x to 44x, 10x eyepieces mounted on Stand P. For illumination we recommend fluorescent or LED Ring Lights or our fiber optic illuminators	
Stand base is 220mm x 284mm	



Order #	26800B-381
Model SPZ-50PFM	
SPZ-50 Stereo Zoom Binocular Microscope 6.7x to 50x, 10x eyepieces mounted on Stand PFM. Has built in 9W Fluorescent ring light.	
Stand base is 220mm x 284mm	

Boom Stand Systems



Order #	26800B-374-10
SPZ-50 Stereo Zoom Binocular Microscope	
6.7x to 50x, 10x eyepieces, 0.5x lens, Ring Light Adapter, and LED Ring Light with Intensity Control mounted on our Double Arm Stainless Steel Ball Bearing Boom Stand	



Order #	26800B-375-10
SPZT-50 Stereo Zoom Trinocular Microscope	
6.7x to 50x 10x eyepieces, 0.5x lens, Ring Light Adapter, Fiber Optic Illuminator with Annular Ring Light, USB Infinity 1, 1.3 Megapixel Camera with Infinity Image Analysis Software mounted on our Double Arm Stainless Steel Ball Bearing Stand. Computer not included.	

22

Stereo Zoom Microscopes



Preconfigured Systems

Shown below are some of our popular systems or you can configure a system to match your application

Articulating Arm Systems



Order # 26800B-374-15

SPZT-50 Stereo Zoom Trinocular Microscope

6.7x to 50x, 10x eyepieces, 0.5x lens, Ring Light Adapter, 150 watt Fiber Optic Illuminator with an Annular Ring Light, mounted on an articulating arm with 17" x 20" base

Stereo Zoom Microscopes

Examples of other Popular Systems

Systems shown below can be ordered using individual part #s. Call us, we can help configure a system to meet your requirements



Binocular Scope on Single Arm Boom Stand with Fiber Optic Illumination



Binocular Scope on Single Arm Deluxe Stand with 17"x20" base



Trinocular Scope on Stand PF with Built in Fluorescent Illumination and USB Camera



Binocular Scope on Deluxe Double Arm SS Ball Bearing Stand with 17"x20" base



Binocular Scope mounted on Stand P with Fiber Optic Illumination



NSW Series Microscope mounted on Stand PF.

Optional Accessories

Eyepiece Lenses and Rubber Eye Guards



Order #	Description
26800B-444	DSW-5X eyepieces for DSZ-44, DSZT-44 and NSW series bodies. F.N. 22.5
26800B-446	DSW-5X eyepieces for DSZ-70 and DSZT-70 series bodies. F.N. 20.



Order #	Description
26800B-441	DSW-10X eyepieces for DSZ-44, DSZT-44 and NSW series bodies. F.N. 23.
26800B-441-10	DSW-10X eyepieces for SPZ-50 and SPZT-50 series bodies. F.N. 23.
26800B-445	DSW-10X eyepieces for DSZ-70 and DSZT-70 series bodies. F.N. 20.



Order #	Description
26800B-442	DSW-15X eyepieces for DSZ-44, DSZT-44, DSZ-70, DSZT-70 and NSW series bodies. F.N. 15
26800B-442-10	DSW-15X eyepieces for SPZ-50 and SPZT-50 series bodies. F.N. 15.



Order #	Description
26800B-433	DSW-20X eyepieces for DSZ-44, DSZT-44, DSZ-70, DSZT-70 and NSW series bodies. F.N. 11.4
26800B-433-10	DSW-20X eyepieces for SPZ-50 and SPZT-50 series bodies. F.N. 11.4.

Rubber Eye Guards

Order #	Description
26800B-447	Rubber Eye Guards for DSW eyepieces
26800B-477-10	Rubber Eye Guards for DHW eyepieces

** Eyepieces listed are above sold in pairs only.

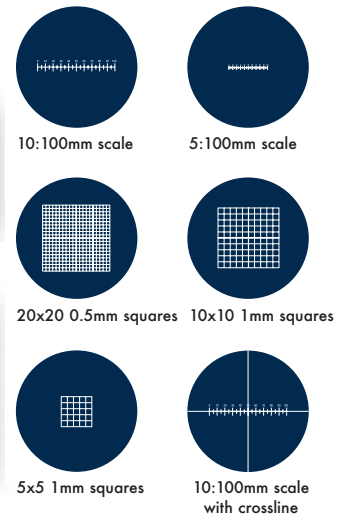
Focusing Eyepiece 10x with Reticle



Order #	Description
26800B-446	10x with 5:100mm scale
26800B-455	10x with 10:100mm scale



Order #	Description
26800B-457	10x with 20 x 20 0.5mm squares
26800B-458	10x with 10 x 10mm 1mm squares
26800B-459	10x with 10:100mm scale with cross line



*Above eyepieces are for the DSZ/NSW series bodies

To order eyepieces for the SPZ Series bodies please add **-10** to the end of the above mentioned part numbers.



Optional Accessories

25 Stereo Zoom Microscopes

Auxiliary Objective Lenses



Order #	Description
26800B-461	Auxiliary lens 0.5x
26800B-462	Auxiliary lens 0.75x



Order #	Description
26800B-463	Auxiliary lens 1.6x
26800B-464	Auxiliary lens 2x



Order #	Description
26800B-465	Lens Cover for protection of objectives

Order #	Description
26800B-460	Adapter to mount Fluorescent Ring Light or Fiber Optic Annular Ring Light

* Please note 0.5x lens cannot be used with SPZ series bodies with stand P and PF. Cannot be used with stands T and TL and with the NSW series with stand P

** 2x lens cannot be used with the DSZ and NSW series bodies.

Camera Adapters



Order #	Description
26800B-455	Adapter to Mount CCD Camera to our Trinocular bodies

* Various Adapters are available for mounting Digital Cameras. Please call with the type camera you want to use with our trinocular microscopes.

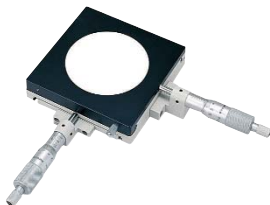
Gliding Stages



Order #	26800B-475
Stage size 350mm x 250mm x 103mm. Base Size: 520mm x 480mm. Range of movement 360mm x 418mm.	



Order #	26800B-476
Stage size: 300mm x 210mm x 40mm. Base Size 250mm x 250mm. range of movement 250mm x 250mm.	



Order #	26800B-471
Gliding stage with attachments for micrometers. Mitutoyo No. 150-192 (MHN1-25). Size 114mm x 114mm. Range of movement 25mm x 25mm.	



Order #	26800B-474
Rota table. Size 135mm. Range of movement 25mm x 25mm.	



Order #	Description
26800B-472	Size 140mm x 114mm. Range of movement 94mm x 66mm.

Illumination

Standard Frequency Florescent Ring Lights



Aven fluorescent ring lights are designed for applications requiring a high quality illuminator. Provides 360° shadow free illumination. Our reflector housing is cast from high quality aluminum alloy (except for model 26200B-201) for durable and cool operation. Features a 17 Watt lamp with 5000 hours of lamp life. (5600 kelvin). Color: Putty. Operates at 115VAC

Order # Description

26200B-201	Fluorescent Ring Light Economy, 8 watt Lamp
26200B-202	Fluorescent Ring Light Standard, 17 watt Lamp
26200B-206	Fluorescent Ring Light ESD Safe, 17 watt Lamp
26200B-203	Fluorescent Ring Light with UV Lamp

White LED Ring Light w/Brightness Control



Designed to be used with standard microscopes and video lenses. It provides a stable bright light with 54 LEDs. These long life LEDs operate at very low temperature, are flicker free and does not change color over time. 110V

Order # Description

26200B-210	White LED Ring Light with Brightness Control
-------------------	-----------------------------------------------------

White LED Ring Light w/Brightness & Sector Control



Designed to be used with standard microscopes and video lenses. Has a 7 step brightness control feature and four lighting modes, 1/4, 2/4, 3/4, and Full. Excellent for applications requiring a high degree of lighting control. Incorporates 60 Long Life LEDs that are flicker free and operate at low temperature and does not change color over time. 110V.

Order # Description

26800B-211	White LED Ring Light with Brightness & Sector Control
-------------------	--------------------------------------------------------------

Model 21 AC Fiber Optic Illuminator



Features

- High output 150 Watt EKE lamp
- Universal non-slip coupling
- Variable intensity control from 0 to 100%
- Rugged design with thermal switch and safety cut-off
- Easy lamp change
- Integrated mounting capabilities
- Custom configurations available

Specifications

Input voltage.....110 VAC
 Lamp adjustment range.....0 to 100%
 Lamp life.....250 to 10,000 hours
 Weight.....7.5 lbs. (3.4 kgs.)
 Dimensions.....7.13"L x 3.53"H x 7.91"D

Order # Description

26200A-201	Model 21 AC Fiber Optic Illuminator
26200A-212	Adapter for 1.125" ID Ring Light
26200A-217	Adapter for 2.31" ID Ring Light and Goosenecks



Illumination

Model 150 Fiber Optic Illuminator



Features

- High quality ball bearing fan for low noise and vibration
- High output 150 watt bulb
- Variable intensity control
- Easy lamp change
- Color/ Daylight Filters available
- Color Beige

Specifications

Input voltage.....	110 VAC
Color Temperature.....	3250 kelvin
Lamp life.....	200-2000 hours
Weight.....	7.5 lbs. (3.4 kgs.)
Dimensions.....	7.0" x 7.5" x 6.5"

Order #	Description
26200A-200	Model 150 Fiber Optic Illuminator
26200A-212	Adapter for 1.125" ID Ring Light

27 Stereo Zoom Microscopes

Fiber Optic Ring Lights



Features

- Uniform Lighting
- Streamlined Design
- 360° shadow free illumination
- 3 thumb screw for easy mounting
- Accepts polarizer and darkfield adapters
- Black anodized aluminum housing
- Crimped Stainless Steel terminations
- 36" cable length

Order #	Description
26200A-402	Ringlight 2.31" ID Can be mounted on all SPZ and DSZ and NSW Series Microscopes
26200A-403	Ringlight 1.125"ID Can be mounted on Video Lenses

Fiber Optic Goosenecks



These light guides are constructed with high quality glass fiber optics and provide the highest degree of adjustable and interference free uniform illumination of focused white light. Focusable lenses allow for variable spot light adjustments making these ideal for situations where intense illuminations is required. Our light guides are offered in a standard stainless steel obedient sheathing which offers "stay-put" positioning.

Order #	Description
26200A-523	Double Gooseneck with Focusing lens 18" Long

Fiber Optic Area Backlights



These high-output, uniform backlights are made of the highest quality components and offer a sleek, slim design, which makes them highly versatile for mounting in tight spaces. The housing consists of black, electrocoated steel and the sheathing is PVC covered metal hose. Backlights have a ±10% uniformity. 36" long cable length.

Order #	Description
26200A-531	FOA Backlight 2" x 2" (50.8 x 50.8mm)
26200A-532	FOA Backlight 4" x 4" (101.6 x 101.6mm)
26200A-533	FOA Backlight 4" x 6" (101.6 x 152.4mm)
26200A-534	FOA Backlight 6" x 8" (152.4 x 203.2mm)

CCD & CMOS Cameras

High Resolution DSP CCD Color Cameras



Our color cameras use single integration type CCD complemented by a digital signal processing system to provide both high quality images and a host of compensation functions. These cameras are ideal for machine vision, video inspection and microscopy applications.

Highlights

- CCD Total Pixels: 881(h) x 508 (v)
- Resolution: 470 TVL / 580 TVL Enhanced
- On Screen Display
- 26100-100 has S-Video and Composite Outputs
- 26100-102 has Y/C and Composite Outputs
- C & CS Mount
- Detail Specs at www.aveninc.com

Order # Description

26100-100	1/3" CCD Camera with power supply
26100-102	1/2" CCD Camera with power supply

Infinity 1 CMOS Color Cameras



The Infinity CMOS USB 2.0 cameras are designed to be a cost effective, versatile solution for a variety of microscopy imaging applications. Features include auto white balance, full exposure, control, programmable gain, sub-windowing and region of interest. It is excellent for documentation and archiving applications.

Highlights

- 1 and 3 Megapixel. 6 also available upon request
- Perfect for documentation and archiving applications
- Fast frame rate
- C-mount
- Infinity Analyze Software Included. For more details of this software please visit our website at www.aveninc.com

Order # Description

26100-215	Infinity 1 CMOS 1.3 Megapixel Camera
26100-216	Infinity 1 CMOS 3.1 Megapixel Camera

Specifications

Megapixel	Resolution	FPS	Sensor
1.3	1280 x 1024	15	1/2" CMOS
3.1	2040 x 1536	6	1/2" CMOS

Infinity 2 CCD Color Cameras



Equipped with a high quality Sony CCD Sensor, these USB 2.0 cameras offer excellent sensitivity, high dynamic range and a 12-bit digital output. Features include binning, auto white balance, full exposure control, programmable gain, sub-windowing and region of interest. It is ideal for higher-end scientific, medical, ophthalmic and life science applications.

Highlights

- 1, 2 and 3 megapixel resolution
- Higher dynamic range for quantitative analysis
- Fast frame rate
- Low noise electronics
- C-Mount
- Infinity Analyze Software Included. For more details of this software please visit our website at www.aveninc.com

Order # Description

26100-220	1.4 Megapixel CCD Camera
26100-221	2.0 Megapixel CCD Camera
26100-222	3.3 Megapixel CCD Camera

Specifications

Megapixel	Resolution	FPS	Sensor
1.4	1390 x 1040	15	1/2" CCD
2.0	1616 x 1216	12	1/1.8" CCD
3.0	2080 x 1536	5	1/1.8" CCSD



Frame Grabbers

FlashBus Spectrim



FlashBus Spectrim

Highlights

- Bus mastering video frame grabber
- Composite & S-Video Inputs
- TriMedia Video Processor
- High quality video capture
- SDK Kit available

Order # Description

26100-302	FlashBus Spectrim
------------------	--------------------------

LCD Monitors

14" LCD Monitor



Features:

- 750 ohm cable TV input for connecting to Cable TV
- Left and Right Audio outputs for external speakers
- L/R audio input jacks to connect a sound card
- L/R Audio input to connect to an external AV output
- S-Video input
- 15 pin D-Sub input to connect monitor to a PC
- Max Resolution 1024 x 768 pixels
- On Screen Menu to control a variety of functions
- Plug & Play capable
- Remote and AC/DC Adapter Included.

Order # Description

26700-403	14" LCD Monitor
------------------	------------------------

17" LCD Monitor



Produces only the sharpest and most brilliant color images. Featuring easy to use OSD controls and built in speakers you will find this monitor both easy to use and a pleasure to look at. This monitor offers a maximum resolution of 1280 x 1024 pixels and a refresh rate up to 75KH translating into a flicker free that is easy on your eyes.

Comes with

- 12V DC adapter /power chord
- D-Sub 15 pin VGA connector cable
- Audio Cables

Inputs

- Video Input: 15-pin D sub/ AV/ S-Video
- DC plug on monitor right side

Order # Description

26100-402	17" LCD Monitor
------------------	------------------------

Stereo Zoom Microscopes

Stands and Focus Mounts

Focus Mount



Focus mount to hold our SPZ, DSZ and NSW Series bodies. Rack & Pinion mechanism allows for precise focusing over a 55mm travel. Coarse focus mechanism incorporates a slip clutch and tension adjustment. Fits a 25mm mounting post and has an opening to accept bodies of diameter 74mm (2.9")

Order # Description

SCW-PA	Focus Mount
---------------	--------------------

30

Stereo Zoom
Microscopes

Stand Type PF with Focus Mount and Built in Fluorescent Light



Features:

- Large stage 220mm(8.66") x 284mm (11.18") to accommodate a variety of parts
- Built in 9 watt low temperature fluorescent light in focus mount
- Length of Post 250mm (9.84")

Order # Description

Stand PF	For DSZ-44, DSZT-44, and NSW Series Bodies
Stand PFM	For SPZ-50 and SPZT-50 Series Bodies
Stand PFL	For DSZ-70 and DSZT-70 Series Bodies

Pole Type Stand with Focus Mount



Features:

- Large stage 220mm (8.66") x 284mm (11.18") to accommodate a variety of parts
- Length of Post 250mm (9.84")

Order # Description

Stand P	For SPZ, DSZ, and NSW Series Bodies
----------------	-------------------------------------



Stands and Focus Mounts

Stand Type T and L with Focus Mount

01

Stereo Zoom Microscopes



Features:

- Transmitted and Incident Lights are built in the Type T stand as shown
- Type T stand has Fluorescent 9 watt incident light and Tungsten Transmitted light
- Base 160mm x 219mm (6.30" x 8.62")
- Stage Plate: Frosted glass plate (diameter 80mm (3.15")) and Frosted blue filter (diameter 37mm (1.46"))
- Stand Type L same as stand T but Incident Light is Tungsten (not shown)
- Rack and Pinion Focus Mount, tension control pin included

Order # Description

Stand T	For DSZ-44, DSZT-44, and NSW Series Bodies
Stand L	For DSZ-44, DSZT-44, and NSW Series Bodies

Standard Boom Stand with Mounting Post



Features:

- Perfect for stationary video and microscopy applications
- Heavy Duty Steel Base 10" x 10" x " (254mm x 254mm x 19mm), 21lbs
- 16" (406mm) Vertical Post with 16" (406mm) Horizontal Post. Diameter of Post and Bar 1-3/16" (30.16mm). Nickel plated
- Safety Clamp Included
- Mounting Post with tilt feature for Focus Mount SCW-PA
- Sturdy and stable
- Requires focusing mount to mount microscope bodies

Order # Description

26800B-433	Standard Boom Stand with Mounting Post
-------------------	-----------------------------------------------

Deluxe Boom Stand with Mounting Post



26800-433A

Features:

- Perfect for stationary video and microscopy applications especially where vibrations can disrupt your work
- Heavy Duty Steel Base 10" x 10" x " (254mm x 254mm x 19mm), 21lbs or 17" x 20" Heavy Duty Base , 27lbs to accommodate large parts on base
- 16" (406mm) x 1-1/2" OD (38mm) stainless steel vertical post
- 18" (457mm) x 1-1/2" OD(38mm) aluminum horizontal post
- Post with tilt feature for Focus Mount SCW-PA included
- Quick release red anodized aluminum safety clamp
- Optional 25" Vertical Post and 25" Horizontal Bars available
- Optional table mount and C-clamp mounts available

Order # Description

26800B-433A	Deluxe Boom Stand with Tilt Mounting Post and 10" x 10" base
26800B-433B	Deluxe Boom Stand with Tilt Mounting Post and 17" x 20" base



26800-433B

Stands and Focus Mounts

Standard Dual Arm Ball Bearing Boom Stand with Mounting Post



Features:

- Stability of the standard boom stand but with ultra smooth movement of a ball bearing slide
- Great for inspection applications where magnification adjustment and the ability to move across a specimen are important
- Heavy duty base 11" x 10" x 1.25" (285mm x 260mm x 32mm)
- Stainless Main Vertical post 15" (380mm) long, extension post 9" long (225mm). OD 1-1/2" (37mm) for a total post length of 24"
- Stainless Steel Horizontal Post 22.5" long from end to end. (570mm)
- Safety Clamp included
- Post with Tilt Feature for Focus Mount SCW-PA included
- Weight 43lbs

Order #	Description
26800B-431A	Double Arm Ball Bearing Boom Stand

Deluxe Dual Arm Ball Bearing Boom Standing with Mounting Post



26800-433C

Features:

- Ultra smooth movement of a ball bearing slide
- Two types of bases available 10" x 10" (254mm x 254mm) and 17" x 20" (432mm x 508mm) Weights 21 lbs and 27 lbs respectively
- 16" (406mm) Stainless Steel Vertical Post (OD 1-1/2"). Other sizes available on request
- Thomson linear ball bearing and dual hardened stainless steel shafting for the horizontal axis. Total horizontal motion 12-1/2" (317.5mm)
- Safety Clamp included
- Optional table mount clamps and C-Clamps available
- Post with tilt feature for focus mount SCW-PA included



26800-433D

Order #	Description
26800B-433C	Deluxe Dual Arm Ball Bearing Boom Stand with Mounting Post and 10" x 10" base
26800B-433D	Deluxe Dual Arm Ball Bearing Boom Stand with Mounting Post and 17" x 20" base



Stands and Focus Mounts

Lift Articulating Arm Boom Stand

Stereo Zoom Microscopes



26800-433E



26800-433F

Features:

- Designed to allow maximum freedom of movement
- Perfect for video and lighting applications that require a lot of movement
- Flexible arm can easily be adjusted into hard to reach locations and out of the way again
- Various mounts and bases available to suit your application
- Vertical Post 16" (406mm). OD 1-1/2"
- Lift Articulating boom arm approximately 30"(762mm) horizontal reach, and approximately 15"(381mm) vertical travel ± 40° movement from horizontal
- Adjustable gas spring counter balance allows "free floating" of 0-20 lbs. Ambidextrous vertical position lock. Gas spring provides controlled "safe" lift and decent
- Mount post with tilt feature included for focus mount SCW-PA
- Safety Clamp included

Order #	Description
26800B-433E	Lift Articulating Arm Boom Stand with Table Clamp
26800B-433F	Lift Articulating Arm Boom Stand with 17" x 20" base

Standard Stand



Features:

- Aluminum powder coated base 11" x 13" x 1/2" (279mm x 330mm x 12.7mm)
- 10 tapped holes for mounting X-Y stages
- 16" Stainless Steel vertical post (OD 0.96", 24.5mm) with safety clamp
- Compatible with focus mount SCW-PA

Order #	Description
26800B-433G	Standard Stand with Safety Clamp

Ergo Stand



Features:

- Aluminum powder coated base 13" x 13" x 1/2" (330mm x 330mm x 12.7mm) with Black & White glass plate
- 16" Stainless Steel vertical post (OD 0.96", 24.5mm) with safety clamp
- Compatible with focus mount SCW-PA

Order #	Description
26800B-433H	Ergo Stand with Safety Clamp

Shop Microscopes

Shop Microscope 40x and 100x



Designed for quick and precise measurements in laboratories, workshops and assembly lines. Comes with a dual scale reticle graduated in both inches and millimeters. A turn of the eyepiece brings the reticle in sharp focus. No calibration is needed. Reticle can be rotated for measurement in any direction. Dual knobs with rack and pinion focusing lets you quickly refine the image. Includes a fully adjustable battery operated penlight illuminator. Scope has a cutaway opening at base for subject manipulation.

Specifications

MODEL	Shop Microscope 40x	Shop Microscope 100x
Magnification (Field of View)	40X (4.5 mm)	100 (1.8 mm)
Objective Lenses	4x	10x
Focusable Eyepiece	10x with Scale	10x with Scale
Measuring Range	3.0 mm/0.1"	1.0 mm/0.05"
Minimum Gradation	0.02 mm/0.001"	0.01 mm/0.001"
Working Distance	15 mm	5.5 mm
Height	200 mm	200 mm
Width	65 mm	65 mm
Net Weight	570 g	580 g
Accessory	Penlight	Penlight

Order # Description

26800C-531	Shop Microscope 40x with 3.0mm/0.1" Scale
26800C-532	Shop Microscope 100x with 1.0mm/0.05" Scale

Pocket Microscopes 25x



"Pen Size" powerful direct measuring pocket scope for quick close examination. Excellent for detecting flaws or imperfections, surface measurements, examination of fibers, print etc.

Comes with a measuring metric glass reticle. Has beveled opening for gathering and focusing light. Scope has an aluminum case with a satin finish and pocket clip. Furnished in a vinyl sleeve.

Order # Description

26800C-533	Pocket Microscopes 25x
-------------------	-------------------------------

Specifications

Magnification	Field of View	Scale Calibration	Measurement Range	Length	Diameter
25x	3.24mm	0.05mm	0-3mm	127mm (5")	11.10mm (7/16")



Shop Microscopes

Illuminated Pocket Microscope 40x



Perfect carry with microscope with 40x magnification. Ideal for on site detailed examination of small areas and objects. Useful for engineers, tool makers, quality control inspectors, field researchers etc.

Has a built in light source that can be turned on by pulling on one arm of the scope. In addition a clear acrylic stand allows ambient light to the object under examination.

Includes a measuring reticle. Operates on two AA batteries not included.

Order #	Description
26800C-534	Illuminated Pocket Microscope 40x

3D Stereo Zoom Microscopes

Specifications

Magnification	Field of View	Scale Calibration	Max Measurement	Field of View	Size
40x	4.4mm	0.05mm	4mm	25mm	140x40x20 mm

Loupes & Magnifiers

Loupes with Scales



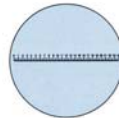
Loupes with reticles for measurement and inspection. Comes with ReticleScale No.1 and Vinyl Case. Optional reticle scales are available.

Order #	Description
26001	Loupe with Scale 7x
26002	Loupe with Scale 10x
26003	No. 1 Reticle Scale
26004	No. 2 Reticle Scale
26005	No. 3 Reticle Scale
26006	No. 4 Reticle Scale

SCALE PATTERNS



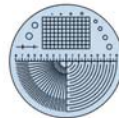
No.1
Lengths in either inches or millimeters can be measured with the appropriate line. Maximum: 0.6" or 16mm



No.2
Lengths can be measured in 0.1 millimeters increments. Maximum: 16mm



No.3
Angles, radius, diameters, widths, etc. can be measured mainly in inches.



No.4
Angles, radius, diameters, widths, etc. can be measured mainly in millimeters.

Loupes & Magnifiers

Inspection Eye Loupes



Great for close inspection. Rests comfortably in the eye socket. Lightweight yet sturdy. Plastic mount. Our 8x, 6x and 4x loupes come with rubber cushion for additional comfort.

Order #	Description
26034	10x Eyeloupe 1" WD
26041	8x EyeLoupe with Cushion 1" WD
26042	6x EyeLoupe with Cushion 2" WD
26043	4x EyeLoupe with Cushion 2.5" WD

36

Stereo Zoom
Microscopes

Inspection Eye Loupes



Fixed focus magnifiers with clear acrylic base that permits ambient light to illuminate subject for clear bright viewing.

Order #	Description
26051	10x Inspection Magnifier with 1" Diameter Lens
26052	3x Inspection Magnifier with 3" Diameter Lens

Swing Out Inspection Loupes



Order #	Description
26010	10x Hex Loupe 18mm Diameter Triplet Lens
26011	10x Loupe 16mm Diameter Triplet Lens
26012	20x Loupe 12mm Diameter Triplet Lens

Giant Folding Loupe



Double glass lens provides a large viewing area. Lens diameter is 1-3/4" and has a magnification of 6x

Order #	Description
26013	Giant Folding Loupe

Magnifier with Clamp



Has an adjustable 2 1/2" diameter magnifying glass. Allows for close observation of work during soldering operation.

Order #	Description
2600	Magnifier with Clamp



Loupes & Magnifiers

37

Stereo Zoom Microscopes

Magnifier with Tweezers



Magnifying glass mounted onto a stainless steel, anti acid, anti magnetic tweezers. Lens diameter is 1.25" and the power is 3x. Available with pointed or curved tweezer tips. Excellent for working on small parts that require magnification.

Order # Description

26030 **3x Magnifier** with Curved Tips

26031 **3x Magnifier** with Straight Tips

Headband Magnifier with LED Illumination



Comes with 1.5x, 2x, 2.5x and 3.5x clip-on lenses. LED light provides 50,000 hours of illumination. Light operates with 3 AAA batteries not included.

Order # Description

26415 **Headband Magnifier** with LED Illumination

Headband Magnifier with Light



Comes with 1.2x, 1.8x, 2x and 3.5x clip on lenses. Features a 2.2v bulb and operates with 4 AAA batteries. Batteries not included.

Order # Description

26416 **Headband Magnifier** with Light

Optivisor



Soft pliable wide headband for ultimate comfort. Easily adjusts to any head size. Self locking, remains in place. Glass lens.

Order # Description

26101 Magnification: 1-1/2x Working Distance: 20"

26102 Magnification: 1-3/4" Working Distance: 14"

26103 Magnification: 2x Working Distance: 10"

26104 Magnification: 2-1/2" Working Distance: 8"

26105 Magnification: 2-3/4" Working Distance: 6"

26106 Magnification: 3-1/2" Working Distance: 4"

Accessories

Order # Description

26107 **Replacement Lens #2**

26108 **Replacement Lens #3**

26109 **Replacement Lens #4**

26110 **Replacement Lens #5**

26111 **Replacement Lens #7**

26112 **Auxiliary Lens 2-1/2x**



Magnification Lighting

ProVue Magnifying Lamps Available in Ivory, Satin Silver, and Antique Copper!



26.501-SSL



26.501-SCP

Our most popular magnifying lamps (now available in a choice of colors) are designed for professionals. It is equipped with an ultra-bright 22-watt circular florescent bulb and a Crystal Clear 5", 3-diopter (1.75x) glass lens to provide 360° distortion free viewing. Metal housing is mounted on a 45" spring balanced arm that stays set in any position. Lamp operates at 115V-AC and comes complete with mounting clamp and a 5-foot power cord. 1-year warranty (excludes bulb).

Optional Accessories

- Weighted Base
- Swing-Away Lens – 5 diopter (2.25x) for total magnification of 8 diopter (4x)
- Auxiliary Lens – 3 diopter (1.75x) for total magnification of 6 diopter (3.5x)



Swing-Away Lens



Auxiliary Lens

Order # Description

26.501-SIV	ProVue Magnifying Lamp-Ivory
26.501-SSL	ProVue Magnifying Lamp-Satin Silver
26.501-SCP	ProVue Magnifying Lamp-Antique Copper
26.501-WTB	Weighted Base
26.501-B22	22-watt Replacement Bulb
26.501-SLA	Swing-Away Lens – 5 Diopter (2.25x)
26.501-AL3	Auxiliary Lens – 3 Diopter (1.75x)

Magnification & Task Lighting

ProVue Deluxe Magnifying Lamp 'Features a Heavy Duty Spring Balanced Arm'



Designed for demanding professionals. It is equipped with an ultra-bright 22-watt circular fluorescent bulb, a Crystal Clear 5", 3-diopter (1.75x) lens, mounted on a silver-grey metal housing. The fluorescent bulb is protected with a clear plastic diffuser/splash guard. The heavy-duty adjustable arm with tempered steel springs allows for easy positioning. When fully extended the arm has a reach of 35". Comes with a mounting clamp. Can also be mounted directly on the working surface. Operates at 115V-AC and comes with a 5-foot power cord. 5-year warranty (excludes bulb).

Optional Accessories

- Swing-Away Lens – 5 diopter (2.25x) for total magnification of 8 diopter (4x)
- Auxiliary Lens – 3 diopter (1.75x) for total magnification of 6 diopter (3.5x)



Swing-Away Lens



Auxiliary Lens

Order # Description

26.501-DSG	ProVue Deluxe Magnifying Lamp-Silver
26.501-B22	22-watt Replacement Bulb
26.501-SLA	Swing-Away Lens – 5 diopter (2.25x)
26.501-AL3	Auxiliary Lens –3 Diopter (1.75x)

Magnification Lighting

Maxi-Mag Magnifying Lamp



Super large 7", 3-diopter lens gives you unrivaled field of view and work space. Comes with a powerful 32-watt circular fluorescent bulb. This lamp can show you things that you have never seen before! The Ivory mar-resistant engineered plastic housing is mounted on a 45" spring balanced arm for easy positioning. Lamp operates at 115V-AC and comes complete with a mounting clamp and a 5-foot power cord. 1-year warranty (excludes bulb).

Optional Accessories

- Weighted Base
- Swing-Away Lens – 5 diopter (2.25x) for total magnification of 8 diopter (4x)



Swing-Away Lens

Order #	Description
26.503-SIV	Maxi-Mag Magnifying Lamp – Ivory
26.503-B32	Replacement Fluorescent Bulb
25.501-WTB	Weighted Base
25.501-SLA	Swing-Away Lens – 5 Diopter (2.25x)

Mighty Mag Magnifying Lamps



The Mighty Mag features a large 7" x 5.2", 3-diopter (1.75x), distortion free Crystal Clear lens mounted in a high tech style mar-resistant engineered plastic housing with dual light sources. The large, rectangular viewing area of the glass enables comfortable viewing with both eyes and provides shadow-free magnification with light coming from both sides. The housing is mounted to an internal spring balanced arm with a 30" reach that will set in any position. Unit operates at 115V-AC and comes complete with mounting camp and a 5-foot power cord. 1-year warranty (excludes bulb). Available in Ivory and Black (ESD safe).

Optional Accessories

- Swing-Away Lens – 5 diopter (2.25x) for additional magnification

Order #	Description
26.505-SIV	Mighty Mag Magnifying Lamp – Ivory
26.505-ESD	Mighty Mag Magnifying Lamp – Black
26.505-BO9	Replacement Bulb
26.501-SLA	Swing-Away Lens – 5 Diopter (2.25x)
26.506-BT4	Black Light Bulb



Magnification Lighting

MaxiVue Magnifying Lamp



The MaxiVue offers a fully adjustable magnifier lens (can be rotated) for full range inspection capabilities. Unnecessary slouching is eliminated. Three 9-watt compact fluorescent lamps provide two light levels: 27-watts from top and both sides of the magnifier or 18-watts of side-to-side lighting. Features a large 6.9" x 4.2", 3-diopter (1.75x) Crystal Clear lens, mounted on a mar-resistant engineered plastic housing. The spring balanced arm has a 40" reach and stays in any position. Operates at 115V-AC and comes complete with a mounting clamp and a 5 foot power cord. 1 year warranty (excludes bulbs).

Optional Accessories

- Weighted Base

Order # Description

25.506-SIV	MaxiVue Magnifying Lamp - Ivory
26.501-WB	Weighted Base
26.505-B	Replacement Bulb
26.506-BT4	Black Light Bulb

VuePlus Magnifying Lamp



VuePlus features a 4", 3-diopter Crystal Clear lens. Comes with a 60-watt incandescent bulb which provides "incident lighting" for viewing irregular work surfaces. Comes with a 30" spring balanced arm with a tension control knob at the arm joint, a 75-watt incandescent bulb and a table mounting clamp. Operates at 115V-AC.

Order # Description

26.504-SBK	VuePlus Magnifying Lamp - Black
-------------------	----------------------------------------

OptiVue Magnifying Lamp



OptiVue combines function and form in one small package. With a powerful 13-watt fluorescent bulb, an all capable 3-diopter lens, and a highly flexible gooseneck, this small "goes anywhere" dynamo provides illumination and magnification wherever you need.

Order # Description

26.507-SBK	OptiVue Magnifying Lamp - Black
-------------------	----------------------------------------

Task Lighting

Titan Halogen 150 Watt Task Light



Provides clean and crisp light. Features a powerful 150-watt bulb mounted in a black metal housing. Comes complete with a 35" spring balanced arm with tension control and c-mounting clamp. Operates at 115V-AC.

Order # Description

26.512-SBK	Titan 150-watt Task Light
-------------------	----------------------------------

Elumina 50 Watt Task Light



With a contemporary design, the Elumina task light allows you to direct light where you need it. Adjustable arm extends 23 inches from the weighted base. Lamp includes a 50-watt halogen bulb. Silver Satin Finish. Comes with a 5-foot power cord. Operates at 115V-AC.

Order # Description

26.511-SSL	Elumina 50-watt Task Light
-------------------	-----------------------------------

Aurora Combo Lamp



Features a 9 1/2" shade with a 22-watt fluorescent and a 60-watt incandescent bulb. A 3-way switch permits selection of fluorescent or incandescent or both. A 42" adjustable spring balanced arm with tension control allows you to position the lamp exactly where you require. Ivory color. Comes with a c-mounting clamp and a 5-foot power cord. Operates at 115V-AC.

Order # Description

26.515-SIV	Aurora Combo Lamp
-------------------	--------------------------



Task Lighting

Magna Fluorescent Lamp



Features a flexible 42" spring balanced arm supplied with two 15-watt fluorescent tubes that provide uniform light. 19" rectangular head features a handle that permits easy positioning. Comes with a c-mounting clamp and a 5-foot power cord. Operates at 115V-AC.

Order #	Description
26.516-SIV	Magna Fluorescent Lamp

43

Magna Deluxe Fluorescent Lamp



A whole new class of elegant looking fluorescent light from Aven designed to give you crisp, flicker-free lighting, and a maximum uniformity together with a larger lighting area. The 20" lighting head is totally enclosed and features a 55 watt fluorescent bulb. Features a built-in electronic ballast for increased lumen.

The heavy duty industrial grade adjustable arm with tempered steel springs and tension control knobs allows you to easily position the lamp where you want it. The head swivels 310° and tilts 210° for maximum adjustment. Comes with a mounting clamp and a 5 ft power chord. Operates 115V-AC. 1-year warranty (excludes bulb).

Order #	Description
26.516-D155	Magna Deluxe 20" Fluorescent Lamp

Magnification & Task Lighting

Sirus Quartz Halogen Task Lights



Excellent for all types of applications requiring high intensity illumination, such as manufacturing, assembly, and inspection. Round tube arms are vibration resistant but can be adjusted to provide the lighting angle you require (Also available with a flex arm). Lamp Head can be moved in up and down direction. 20 Watt Halogen bulb included. Can accept up to 50 watt bulb. C-Clamp is included. Optional Magnetic Base also available. Industrial Grade Quality. 1-year warranty (excludes bulb).

Order #	Description
26.521	Short Arm Task Light
26.522	220mm (8.66") Arm Task Light
26.523	440mm (17.32") Arm Task Light
26.524	800mm (31.5") Arm Task Light
26.525	520mm (20.5") Flex Arm Task Light
26.520-MB	Magnetic Base